

DG 104

DOUBLE MITRE SAW



DOUBLE MITRE SAW DG 104



Description

- The optimal double mitre saw for series production as well as for special applications
- The universal pivoting and tilting of both saw units allows cutting of high and wide profiles as well as every type of compound mitre. Consequently, many profiles can be cut without support blocks
- External-dimension cuts possible for all cutting variants. Consequently, no complicated length calculations are necessary. This is a big advantage when cutting special angles
- Pivoting range with digital angle display
- Safety hoods
- Equipped with saw blades as standard
- Equipped with digital display E 111 as standard
- Pulsed coolant system

Technical specifications

- Minimum cutting length at 90° 350 mm
- Minimum cutting length tilted at 45° 350 mm
- Pivoting range inwards 90° - 45°
(up to 22.5° manual with digital display)
- Tilting range inwards pneumatically 90° - 45°
- For cutting range, see cutting diagram
- Saw blade diameter 420 mm
- Saw blade speed 2,800 rpm

- Power supply 230/400 V, 3~, 50 Hz
- Power output per motor 4 kW
- Compressed air supply 7 bar
- Air consumption per working cycle 40 l without spraying, 64 l with spraying

Cutting length variants

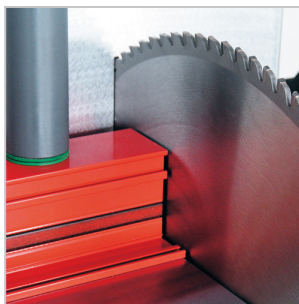
- 3,000 mm
- 4,500 mm
- 6,000 mm

Options

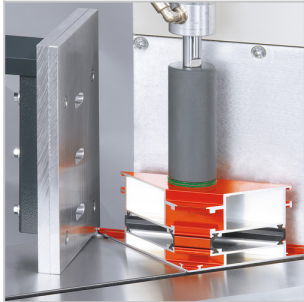
- DG 104 M machine bed made of steel sheet (cutting length 4,500 mm, 6,000 mm)
- Profile lifting bars
- Software for E 580: Software module for chop and oversize length cuts
- Mobile or automatically retractable workpiece supports
- Material clamping units
- Transom stop and lead-cut stop
- Label printer for variants with E 355 and E 580
- Exhaust connectors, extraction system
- Clock system
- Roller conveyors
- Saw blades
- High performance cutting fluid



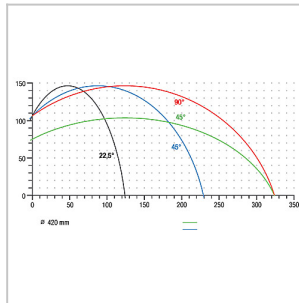
Double mitre saw DG 104
DG 104 + E 580 + special accessories



Double mitre saw DG 104



Double mitre saw DG 104



Double mitre saw DG 104
Cutting diagram DG 104

E 355

POSITIONING CONTROL



POSITIONING CONTROL E 355



Description

- Measuring system is independent of drive
- Positioning accuracy +/- 0.1 mm per metre
- Pneumatic locking at position
- 5.7" matrix display with membrane keyboard and hand wheel for navigation through the operation menus
- Memory for 1,000 data records. Correction values for profiles
- The block number, length dimension, profile number, angular position and quantity can be saved in the memory
- Language selection
- Switching between mm/inches
- RS 232 interface
- USB port on the front

Option

- Printer



Positioning control E 355

E 111

MANUAL CUTTING LENGTH ADJUSTMENT WITH DIGITAL DISPLAY



MANUAL CUTTING LENGTH ADJUSTMENT WITH DIGITAL DISPLAY E 111



Description

- Accurate dimension adjustment using digital display
- Switching from absolute dimensions to chain dimensions
- Actual values of the display are stored when mains is switched off
- Quick read-out from the digital display. Resolution 0.1 mm
- Switching between mm/inches
- Input of any desired reference value by means of front keypad



Manual cutting length adjustment with digital display E 111

E 580

PC CONTROLLER



PC CONTROL E 580



Description

- Machine configurations with one, three or five axes
- Length measurement using an absolute measuring system independent of drive
- Pneumatic locking at position
- Robust, low-wear direct drive for moving saw unit
- Ergonomic location of the control unit
- PC with Windows OS for operating the machine
- Four USB ports
- 12" touchscreen
- One serial RS 232 interface
- Two network ports, RJ45, 10/100 Mbit
- Ports for connecting additional keyboard and mouse

Optional

- Label printer



PC Control E 580